



DECONSTRUCTION

PTY LTD



Company Profile

CONTENTS

Management	3
Scope of Works	4
History and Overview	5
Organisation Structure	6
Policies and Procedures	7
Work, Health and Safety	8
Work Plan and Safety Management	9
Asbestos Removal	10
Completed Projects	11
Reference Contacts	52
Corporate Statements	53
Quality Statement.....	54
Environment	55
Community Support	57
Class 1 Demolition License	58
Asbestos License	59
Insurances.....	60
Demolition License Definitions	63

MANAGEMENT

Established in 1998, J&P Deconstruction Pty Ltd (formerly known as J&P Industries) has obtained extensive experience and knowledge in the deconstruction and demolition industry. J&P Deconstruction (JPD) is 100% West Australian owned and operated and provides an excellent service to our clients.

J&P Deconstruction holds a current Class 1 Demolition licence and adheres to the highest levels of professionalism, integrity and safety - an approach that has resulted in our involvement in some of the South West Region's high-profile demolition projects.

JPD has the knowledge, equipment, and skilled people needed to tackle any deconstruction / demolition project including the specialist requirements of the safe removal and disposal of hazardous materials including asbestos related products. Every employee is suitably trained, qualified and experienced in each project the company undertakes. All personnel are fully conversant with and operate in accordance with the Work, Health & Safety, Environmental Acts and Regulations and Australian Standards required in Western Australia.

The strong emphasis on innovation has allowed us to complete the most complex and challenging projects on time, safely, within budget and to the highest industry standards. With our collaborative approach J&P Deconstruction can confidently deliver exceptional outcomes.

Customer feedback from previous projects also demonstrates that JPD has the capacity and expertise to engage in industrial and commercial projects, regardless of size and technical challenge.

SCOPE OF WORKS

Class 1 Demolition License

DECONSTRUCTION

Demolition and Inducement
Asbestos Removal
Mine site decommissioning
Strip outs and Façade Retention
Imploding of concrete structures
Fire damaged structures
Bridges and or underwater demolition
Chimney stacks both steel and concrete
Site remediation
Soil remediation
Fuel tank removal

CIVIL ENGINEERING WORKS

Bulk earthworks
Site clean-ups
Detail excavations
Trenching
Soil bio remediation

HISTORY AND OVERVIEW



Jim & Priscilla Tolmachoff

Jim Tolmachoff sells up in the USA and migrates to Australia. He started working as a hay bale labourer, loading and stacking in sheds. Jim would receive scrap metal from the farmers as a bonus, he then sold scrap at a dealer. Jim found that selling scrap made a reasonable income and there was a demand for a service of this type. Jim then started merging into the scrap metal industry.

Jim channelled hard-earned capital into financing his fledgling business purchasing a truck to carry the scrap he was diligently collection. Jim along with his wife, Priscilla commenced operations as J&P Metals in 1966 as a scrap metal dealership steadily expanding through hard work and a nose for profitable business.

As their Company and family grew, their grown children took active roles in the Company. The family saw a growing need to diversify their business and in 1985 South West Waste was acquired. In 1995, a specialist bin hire and disposal service for the domestic and commercial markets was formed and Bunbury Handy Bins came into operation.

In 1997, Kingscape Holdings Pty Ltd (“Kingscape”), informally known as J&P Group, was formed as the parent body of this rapidly expanding group of businesses. In 2007, the group was restructured and Kingscape changed its company name to J&P Group Pty Ltd.

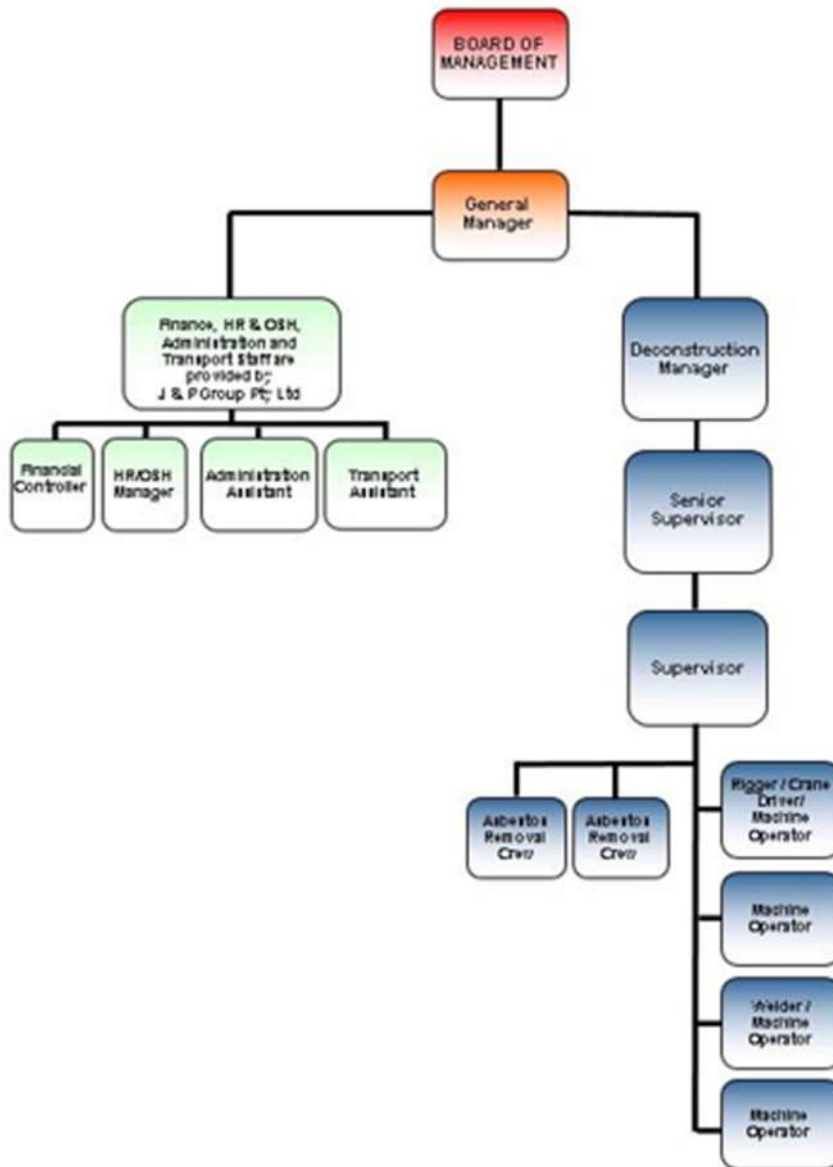
In response to market needs and opportunities, J&P Group continued to expand, 1998 saw business opportunities in new and used plant and machinery sales and also in the deconstruction and demolition industries. To capture this market area J&P Group began trading as J&P Industries (now known as J&P Deconstruction Pty Ltd).

In 2006, J&P Group sold its waste management division, (South West Waste and Bunbury Handy Bins) to Transpacific Industries, obtaining a long term lease for the landfill at Banksia Road. This sale enabled J&P Group to restructure the group of companies and J&P Industries was registered as an independent company under the business name of J&P Deconstruction Pty Ltd.

J&P Deconstruction has a broad market base including national and international clientele and new market areas and clients are actively sourced.

Organisation Chart

J & P Deconstruction Pty Ltd



General Manager- Peter Tolmachoff Email: peter@jppgroup.com.au	Deconstruction Manager - Jeff Clark Email: jeff@jppgroup.com.au
Financial Controller - Jim Zheng Email: finance@jppgroup.com.au	HR/WHS Manager - Bryce McIntosh Email: hrhse@jppgroup.com.au

POLICY & PROCEDURES

J&P Deconstruction has developed and continues to develop various policies and procedures for the benefit all those that work and are associated with the company.

It is important that all employees and sub-contractors familiarise themselves with all company policies and procedures as listed below.

It is also important that company policies and procedures are reviewed from time to time as they are updated.

A policy or procedure will be implemented by means of the following:

Standards

The setting of appropriate company standards to maintain safe systems or work. Where statutory requirements, codes or standards exist, J&P Deconstruction's standards will meet or exceed them.

Regular Reviews

A regular review and upgrading of J&P Deconstruction's standards to reflect changes.

Consultation

Consultation with employees of their responsibilities for safety and health at work.

Information

Informing all employees of their responsibilities for safety and health matters and to ensure that they discharge them effectively.

Advice

Advising contractors of their responsibilities for the health and safety of their employees whilst on J&P Deconstruction's premises or performing tasks on behalf of J&P Deconstruction.

Compliance

Compliance with the policy will be monitored by regular auditing.

WORK, HEALTH AND SAFETY

J&P Deconstruction recognises its obligations under the Work, Health and Safety Act 2020 to provide as far as is reasonably practicable, a safe and healthy workplace for its workers and others who may visit or work with us from time to time.

Objectives

- To give safety matters equal status with other business objectives.
- To provide work facilities that minimise risk to workers.
- To audit and continually strive to improve work, health and safety procedures.
- To employ competent, trained personnel.
- To have workers recognise their responsibilities in identifying, reporting and eliminating hazards in the work place.
- To have employees participate in rehabilitation programs for employees.
- To have sub-contractors and other parties adhere to J&P Deconstruction's work, health and safety policies on our site and assist in the identification of hazards.

In compliance with our safety policy, J&P Deconstruction has set the following goals:

- To provide a copy of the Employment and Safety Handbook to each worker.
- To provide a manual to selected clients (such as in a tender situation).
- To put in place control measures to reduce, if not eliminate the risks of foreseeable and preventable accidents and injuries.
- To provide a safe and healthy workplace for all.

J&P Deconstruction, in its quest to maximise safety for its workers have set the following requirements:

- Each new worker must attend the relevant induction program.
- Training for managers and supervisors in safety and safe work practices.
- Regularly undertake safety audits at work sites to ensure safe work procedures are in place and adhered to.
- Preparation of an operational procedure for reference purposes.

Accidents and injuries should be reported to the relevant manager or supervisor as soon as reasonably practicable and entered into the injury register.

In the event that anyone is injured in the course of their employment, J&P Deconstruction has a return to work policy to assist employees back into the workplace as soon as possible.

WORK PLAN & SAFETY MANAGEMENT

SITE INDUCTION AND GENERAL SAFETY INSTRUCTIONS

As with all deconstruction projects, the emphasis is on team work within J&P Deconstruction. Discussion on all issues concerning Work, Health and Safety are a pre-requisite when commencing each project. To achieve our **Zero Tolerance** stance on incident/accidents JPD produces a Work Plan and Safety Management Programme for each project. This Work Plan & Safety Management Programme includes, but is not limited to, the following:

- Step by Step Work Plan
- Company Structure
- Daily work programme
- Work, Health, Safety and Environmental Policy
- Responsibilities
- Project Specific Safety Procedures
- Policies and Safe Work Procedures Including:
 - Visitors
 - Inductions
 - Duties of Employers
 - Duties of Employees
 - Personal Conduct
 - High Risk Work
 - Working at Heights
 - Confined Space Work
 - Service Isolations
 - Pre-Start Meetings
 - Daily Site Safety Walks
 - Toolbox Meetings
 - Safety Meetings
 - Hazard Identification, Risk Assessment and Control
 - Hazard and Risk Assessment
 - Risk assessment
 - Risk Controls
 - Job Hazard Analysis (JHA)
 - Site Specific Hazards
 - Weekly and Daily Progress Meetings
 - Traceability Records of Materials Removed from Site
 - Transport and Disposal of Materials
 - Accident and Incident Reporting
 - Emergency Procedures
- Safe Working Operations of:
 - Floor Openings, Lift Shafts and Stairwells
 - Asbestos Removal
 - Personal Protective Equipment (PPE)
 - Additional PPE
 - Housekeeping
 - Electrical Safety—Portable Electric Tools
 - Hand Tools
 - Ladders
 - Compressed Air Can Kill
 - Scaffolds
 - Air Hose
 - Skin Care
 - Inclement Weather
 - Site Amenities—Hygiene
 - Amenities
 - Mobile Plant

ASBESTOS REMOVAL

We are able to specialise in the safe removal and disposal of asbestos and exceed the industry standards.

JPD ASBESTOS REMOVAL - SAFE WORKING PROCEDURES

General Conditions to be observed when working with Asbestos Cement Products

- Personnel involved in the removal of asbestos should be licensed to do so. They must wear the appropriate PPE required under the WHS (General) Regulations 2022, Part 8.7 Asbestos Removal Work;
- The designated supervisor should be conversant with the Code of Practice How to safely remove Asbestos 2022;
- Work shall be conducted to minimise the generation of dust and actions taken to avoid the spread of contamination to neighbouring areas;
- The area shall be isolated by the use of barriers to prevent unauthorised access to the work area;
- The work area shall be clearly signposted;
- Personnel who may be exposed to airborne asbestos shall be supplied with respirators complying with AS1716 (type P1 or P2);
- Personnel who may be exposed to asbestos shall be supplied with disposable overalls;
- Where practical, prior to removal, AC products should be lightly sprayed with PVA to bind loose surface fibres;
- Where practical, prior to or during removal, AC products should be wet to avoid release of airborne fibre;
- Power tools shall not be used to drill or cut AC products unless an approved extraction device is fitted. Power tools may be used to remove fastenings;
- Cleaning of AC products is only permitted by approved methods;
- AC products should be handled to minimise breakage, scuffing or scrapping that can release airborne fibre;
- AC materials shall be promptly collected to prevent further crushing or breakage;
- Roof gutters shall be cleaned and sealed prior to removal;
- Asbestos residue in roof spaces or removal area shall be cleaned with a HEPA vacuum cleaner;
- Removed AC products shall be stacked and wrapped in polythene or placed into polythene lined disposal bins for disposal;
- Used disposable overalls and masks shall be placed in plastic bags and disposed of as asbestos waste;
- Waste shall be removed promptly from site;
- All waste shall be disposed in accordance with regulations at registered sites; and
- Dumping certificates/receipts shall be retained and submitted as proof of correct disposal.

JPD's On-site Supervisor also refers to the Code, Appendix 5 Examples of Asbestos removal work on how to safely remove specific asbestos products.

COMPLETED PROJECTS

2023

MONADELPHOUS

South 32 Boddington Mine—Dismantle and remove of Saddleback ANFO Facility

BCP CONTRACTORS PTY LTD

Class 1 Demolition of redundant structure in Yalyalup

ILUKA ENEABBA

Redundant Plant and Equipment, Scrap Metal clean up

DFES

Removal and disposal of demolition concrete waste and redundant concrete panels

2022

TRONOX, KEMERTON

Dismantle & removal of tanks and associate scrap

FULTON HOGAN (MAIN ROADS)

Demolition of Bridge 470, Donnybrook- Kojonup Rd Noggerup

TRONOX, NORTH SHORE

Demolish, removal and disposal of redundant hopper and associated equipment

LAMINEX GROUP

Dismantle and remove redundant timber office building

LAMINEX GROUP

Removal of floor from redundant office and store room

CARBONE

Supervise works to quick cut openings into existing tilt panels at Busselton Central Shopping Centre

2021

ILUKA, JENKINS ROAD CAPEL

Removal and disposal of 1 x 19m x 49m main shed and 2 x lean to's at 20m x 6m. Remove and dispose of 1 x plinth and remove and relocate of tilt panels for future use.

TRONOX, AUSTRALIND

Dismantle, remove and disposal of boiler 1, coal bins and associated infrastructure

BROWNES DAIRY, BRUNSWICK

Removal and disposal of AC Sheeting from workshop and removal of 3 tanks.

BUNBURY CEMETERY

Removal and disposal of redundant furnace & associated equipment

ILUKA RESOURCES, ENNEABA

Removal of redundant surplus mining equipment

JOE MCKENZIE STUBBS, BUNBURY

Demolition and removal of building (ex Bedshed)

TRONOX, AUSTRALIND

Demolition and removal of the redundant H551 DWF and tank plus associated equipment

TRONOX, NORTH SHORE

Demolition, removal and disposal of 13 x curve plate separators and HTR and scrap

CAREY PARK SCOUT HALL

Removal and disposal of Asbestos

LAMINEX GROUP

Dismantle and remove redundant industrial ovens, glue shed, Tanks

CARBONE

Subcontracted for removal of suspended concrete slab from inside warehouse at Bid Food

CARBONE

Removal of 6 tilt panels from Busselton Shopping Centre

QUBE

Demolition and Asbestos removal of main office and warehouse facilities

2020

TRONOX, NORTH SHORE

Demolition, removal and disposal of redundant feed bin and associated scrap

HALLIBURTON, ROCKINGHAM-STAGE 2

Demolition and removal of redundant plant/equipment and scrap steel

TRONOX, AUSTRALIND

Demolition and removal of Old Steam Pipes, Deaerator and boiler 2

WATER CORPORATION-LOGUE BROOK RD, HARVEY

Demolition and removal of tanks, associated frame work, pipework and fencing

HALLIBURTON, ROCKINGHAM-STAGE 1

Removal and disposal of redundant plant equipment and scrap steel

ILUKA, ENEABBA

Demolition, removal and disposal of single men's village. Asbestos removal

ILUKA, YOGANUP NORTH CAPEL

Demolition and removal of steel structure and site clean up

SAM HULL, WAROONA

Asbestos removal from dwelling

2019

B O'CONNELL

Demolition, removal and disposal of house located on Gardner Place Bunbury

ULTRA MODERN PATIOS

Removal of Trusses on shed

SHIRE OF DARDANUP

Demolition and removal of shed

ILUKA RESOURCES

Conveyor Removal and Scrap Cleanup

ST JOHN OF GOD HOSPITAL

Tank removal

COOGEE CHEMICALS

Remove and dispose of boiler, plinth and pipework

PREMIER COAL

Scrap Cleanup—removal of dump trucks

WATER CORPORATION

Collection of scrap pipework

BRADKEN

Remove and dispose of redundant Machine Shop equipment

2018

TALISON LITHIUM

Removal and disposal of Conveyor and Ball Mill

WESTSIDE SCRAP

Reduction and Removal of Transformers

TALISON LITHIUM

Removal and disposal of redundant MCP Plant

PERTH PRINT

Removal and disposal of redundant plant and equipment

CRISTAL PIGMENT AUSTRALIA

Dismantle and removal of redundant boilers

R & M PROSSER

Demolition, removal and disposal of sheds and office buildings

TWINSTORM PTY LTD

Demolition, removal and disposal of 3 x sheds and general site cleanup

2017

GRIFFIN COAL

Demolition, removal and disposal of redundant Char Plant

NEWMONT BODDINGTON GOLD

Demolition and removal of 3 x old water tanks

RM & M PROSSER & SON

Demolition re-development of Unit 15 Homemaker Centre, Blair Street Bunbury

L SORGIOVANNI

Demolition, removal and disposal of redundant buildings, offices and associated plant located at Capel Dairy

SUEZ RECYCLING & RECOVERY

Removal and transportation of redundant plant and equipment and removal of scrap—Giorgi Drive, Picton

2016

BROWNES DAIRY

Removal of plant located at Brownes Dairy, Brunswick

CEM ALLIANCE

Removal and disposal of tanks and redundant plant located at Pemberton Waste Water Treatment Plant

CHARLES HULL CONTRACTING

Asbestos removal and cleanup from burnt properties in Waroona

CHARLES HULL CONTRACTING

Fire damage cleanup, Yarloop Mill

COOGEE CHEMICALS

Removal and disposal of redundant plant and equipment , Kwinana

CRISTAL MINING AUSTRALIA Ltd

Removal and disposal of redundant Ludlow Wombat Concentrator

DORAL MINERAL SANDS

Removal of redundant screening plant located at Burekup

HOLCIM

Removal of designated plant and site cleanup

MICK REA

Cleanup of burnt sheds at Alcoa Farmlet properties.

L SORGIOVANNI

Demolition, removal and disposal of house and dismantle shed located at 147 Stirling Street, Bunbury.

L SORGIOVANNI

Demolition, removal and disposal of Boyanup Dairy, Thomas Street Boyanup

2015

BUNBURY PORT AUTHORITY

Demolition, removal and disposal of Dog Kennels, Stables and out buildings along with removal of scrap

CSBP

Dismantle, removal and disposal of redundant tank located inside the south side shed

ILUKA

Demolition, removal and disposal of redundant house including asbestos, located at the old Yoganup Mine site

LAMINEX GROUP

Removal and disposal of contaminated Soil

LAMINEX GROUP

Deconstruction and Removal of Redundant Plant

R & M PROSSER

Removal and disposal of Asbestos Wall to shed

2014

HARTEC ENGINEERING

Removal of relocation of Tanks located at Coogee Chemicals, Kwinana

WBHO CIVIL

Demolition, removal and disposal of redundant houses located on Alcoa property

E KORDT

Demolition, removal and disposal of house, and asbestos material located in Clarke Street Bunbury

WORSLEY ALUMINA

Dismantle and removal of transportable buildings.

LAMINEX GROUP

Removal and disposal of redundant Plant and Equipment from the Moore Road, Dardanup plant

MICK REA

Demolition, removal and disposal of redundant house, including asbestos materials

BALLARD

Demolition, removal and disposal of redundant house, including asbestos materials

GATEWAY WA

Wrapping, removal and disposal of pipes containing asbestos

2013

BHP BILLITON—WORSLEY ALUMINA

Dismantle, removal and disposal of twin boom stacker.

MARGARET RIVER DAIRY FACTORY

Demolition, removal and disposal of burnt out Margaret River Cheese Factory

2012

BODDINGTON GOLD MINE—HOTHAM FARM

Demolition, removal and disposal of old house located at Hotham Farm and removal and disposal of contaminated soil containing asbestos.

BUNBURY PORT AUTHORITY

Demolition, removal and disposal of redundant ship loader and conveyor line

BUNBURY PORT AUTHORITY

Demolition, removal and disposal of 1 redundant office and 3 redundant houses located at Turkey Point Bunbury. Containing Asbestos.

AVON VALLEY MEATS

Removal and disposal of Plant and Equipment at Malaga Site

VERVE ENERGY

Removal and disposal of Chlorination Facilities

WORSLEY ALUMINA

Dismantle, removal and disposal of Twin Boom Stacker, 2 Reclaimer Carriages, 2 Take Up Towers and 2 Chutes.

2011

WBHO CIVIL

Demolition of office and workshop facilities located at Alcoa Pinjarra

DINOS BULK HAULAGE

Dismantle, removal and disposal of 4 sections of Large Hopper located in Collie

GOODMAN FIELDER

Removal and disposal of Plant & Equipment (including Asbestos) associated with the Hydrogen Plant located on Estuary Drive Bunbury

ILUKA - ENEABBA

Dismantle, removal and disposal of 03 Concentrator and associated plant

R&M PROSSER

Demolition, removal and disposal of house located at Roberts Crescent Bunbury

M. REA

Demolition, removal and disposal of 6 houses, some containing Asbestos, located in Yarloop and Warerup

WATER CORPORATION

Yuna—Dismantle, removal and disposal of roofing over Water Corporation dam located at Yuna (Near Geraldton)

Yarloop—Removal and disposal of Pipeline and concrete plinths

Morawa—Dismantle, removal and disposal of Asbestos Pipe and Jetty

2010

CIMEX—BUSSELTON ON-SITE REPAIRS

Removal and disposal of old concrete batching plant

Duration approx 1 week

MARINE & CIVIL

Consultancy position as Supervisor of the demolition of part of the Busselton Jetty

Duration approx 2 weeks

LAMINEX GROUP

REFINER — Deconstruction and removal of redundant refiner followed by packaging in shipping containers for transport to Germany

SANDING LINE— Deconstruction and removal of redundant Sanding line followed by packaging in Shipping containers for transport to Germany

Duration approx 2 months

PINETECH

Dismantling of redundant plant and equipment

SOUTHERN CROSS FORREST PRODUCTS

Packaging of redundant plant and equipment from Pinetech for transportation to New Zealand

R. PAYTON

Demolition and removal of fibro garage, tin shed and concrete slab from Lot 4 Carob Street Bunbury

WATER CORPORATION

Removal and disposal of site buildings located at Beela Road Brunswick and Baxter Street Donnybrook

Duration 1 week

WESFARMERS

Demolition, removal and disposal of Rose Cottage Pemberton, inclusive of Asbestos Sheeting

ILUKA RESOURCES— Stage 2

Deconstruction and removal of plant at the Bentley Road Laydown area and the SR Plant mine sites located in the South West

2009

GEMEC ENVIRONMENTAL SERVICES

Removal and disposal of 2 fuel tanks and 2 bowsers including back filling and compaction at the old Coates Hire site

BUILDING MANAGEMENT AND WORKS

Wilson Park Primary School Collie

Demolition, removal and disposal of redundant fire damaged buildings, including concrete footings and steel framework. Removal and disposal of asbestos sheeting and asbestos contaminated general waste

ILUKA RESOURCES

Deconstructions and removal of redundant plant and equipment, scrap and general waste throughout Yoganup, MU04, MU07 and SR Plant mine sites.

ITAL DEVELOPMENTS

Demolition, removal and disposal of redundant house located at Monaghan and Stanbury Crescent Bunbury

R&M PROSSER

Demolition, removal and disposal of premises located at Corner of Blair Street, & King Road, Bunbury

HARTEC ENGINEERING

Dismantle & Removal 2 mobile cranes—HMAS Stirling, Garden Island
Duration approx 3 months

NEWMONT BGM

Removal of two EDC electrical control rooms and one sediment pond pump station and two x 30 metre bridge sections
Duration approx three months
Class 2

NEWMONT BGM

Site clean up after partial completion of Construction of New Mine Site
Duration three weeks

BOC Ltd

Removal of redundant plant—Stage 2
Removal of Cooling Towers
Duration approx one week
Class 2

2008**BOC LTD**

Removal of redundant plant and equipment ex Kwinana
Duration of project approx 3 months (current)
Class 1

ILUKA / BEMAX

Deconstruction and removal of tanks at Bunbury Port Authority
Duration of Project Approx 3 months (current)
Class 1

ILUKA RESOURCES

Dismantle and removal redundant plant and equipment
Duration of Project Approx 2 weeks
Class 1

GRIFFIN COAL

Removal of fuel tanks
Duration of Project Approx 1 week
Class 1

NEWTON MOORE SENIOR HIGH

Removal of asbestos breezeway
Duration of Project Approx 1 week
Class 1

TALISON GREENBUSHES

Deconstruction of Redundant Lithium Plant
Duration of Project Approx 3 months
Class 1

LETIZIA BUILDING

Fawly Towers Motel
Demolition, removal and disposal of redundant buildings, inclusive of Asbestos sheeting.

McMAHON

Removal and Disposal of contaminated old tip site located at Western Power Picton East Depot.

R&M PROSSER

Demolition, removal and disposal of premises located on the corner of Blair and King Street Bunbury

ROB CORSO

Demolition, removal and disposal of house, inclusive of asbestos sheeting located at Uduc Road Harvey

ALCOA REFINERY

Removal and Disposal of Asbestos sheeting and miscellaneous trees etc.

Duration of Project Approx 2 months

Class 1

ALCOA—DEL PARK

Removal & Disposal of Asbestos Sheeting

Removal & disposal of Old Workshop Double Story Building & Workshop Amenities

Removal & Disposal of Removal & Disposal of Workshop Shed and Concrete Floors

Removal & Disposal of Security Building

Removal & Disposal of Skid mounted building

Removal & Disposal of Cark Parks and bitumen

Removal & Disposal of Septics & Underground Pipework

Removal & Disposal of Power Piles

Removal & Disposal of Store yard

Removal & Disposal of Heavy Vehicle Wash down bay

Removal & Disposal of Fuel Bay

Removal & Disposal of Wash down area 5

Removal & Disposal of Transportable buildings

Removal & Disposal of Water supply area

Removal & Disposal of Retaining walls, concrete stairwells and associated steelwork

Removal & Disposal of Trees, shrubs, eastern states Eucalyptus trees

2007

AKCMR/BODDINGTON GOLD MINE EXPANSION PROJECT

Duration still current and overall approximately 3 months

Removal & Disposal of 18 Absorption & Residue Tanks.

Approximately 15 metres diameter and 15 metres in height.

Removal and disposal of miscellaneous redundant steel work, concrete, plant and equipment throughout the site.

Removal and relocate on site for BGM potential re-usable structural steel, plant and equipment and associated miscellaneous. Eg - 2 sections of 2 pipe rack bridge sections approx 60 metres in length and 19 metres in overall height.

FREMANTLE PORT AUTHORITY

Fremantle

Removal of Overhead Gantry Crane and 3 External Cranes

Class 1

WSP ENVIRONMENTAL

Mandurah

Removal and disposal of redundant Fuel Tanks

Class 3

ARGONAUT LIMITED

Pead Road Myalup

Removal, Disposal and/or relocation of shed, stock yards, trees & associated misc

BGC

Norrigan Starch Navel Base, Cockburn
Removal & Disposal of Silos & associated Plant & Equipment
Class 3

CIMECO GROUP PTY LTD

City of Bunbury Library, Parkfield Street, Bunbury 6230
Deconstruction & Removal of redundant City of Bunbury Library
Class 2

PINDAN PTY LTD

Newton Moore Senior High School,
Hotchin Street, Bunbury 6230
Deconstruction & Removal of redundant section of building
Class 2

WESFARMERS PREMIER COAL

Premier Road, Collie 6225
Deconstruction and Removal of Redundant Face Shovels & Misc Site cleanups
Class 2

BRADY'S BUILDING PRODUCTS

Bayswater
Deconstruction and removal of tanks & transport to BGC,

BRADY'S BUILDING PRODUCTS

Bayswater
Deconstruction, Removal & Disposal of redundant plant & equipment & site cleanup.

ILUKA RESOURCES

Jenkins Road, Capel 6270
Deconstruction & Removal of Two redundant upright 150,000lt tanks and miscellaneous

HARVEY BEEF

Seventh Street, Harvey 6220
Removal & Disposal of Asbestos Roof Sheeting
Class 3

WESFARMERS PREMIER COAL

Premier Road, Collie 6225
Cleanup of Laydown Yard

CARPET COURT

93 Uduc Road Harvey 6220
Demolish & Removal of House and office including asbestos sheeting, fencing & clean-up
Class 3

PUBLIC TRANSPORT AUTHORITY

No 4, The Crescent, Brunswick 6224
Demolish & Removal of House and out buildings including asbestos sheeting, clean-up
Class 3

J VERSACI – 145 Ocean Drive, Bunbury

Removal of House and out buildings including asbestos sheeting, clean-up
Class 3

BUNBURY CITY REALTY – 5044 South West Highway Brunswick

Removal of one ablution block and two small buildings
Class 3

ALCOA OF WAGERUP – 704 Hoffman Road Yarloop

Removal & Disposal of 2 redundant fuel tanks
Class 3

HANSON CONSTRUCTION MATERIALS

Lillydale Road, Gelorup 6230
General Scrap Cleanup of Laydown Site

SUSAN DU PLESSIS

9 Winton Street, Bunbury 6230
Removal of Asbestos sheeting from walls and roof of garage and shed
Class 3

FORREST PRODUCTS COMMISSION

Weir Road, Harvey 6220
Removal & Disposal of Asbestos Steam Room
Class 2

HARTEC ENGINEERING SERVICES

HMAS Stirling Naval Base, Garden Island, Rockingham
Deconstruction & Removal of redundant slipway
Class 2

ARGONAUT LIMITED

Pead Road, Myalup
Deconstruction of redundant dairy yards & Misc
Class 2

2006

SUNDAY TIMES—PERTH

Dismantling former printing presses and ancillary works 600 tonnes.
Deconstructions, removal and disposal of all redundant plant and equipment plus miscellaneous waste mostly being in confined space.
Class 1

BUNBURY CATHEDRAL GRAMMAR SCHOOL – Francis Road Gelorup

Deconstruct and dispose of water purifying tank system and misc. materials
Class 2

SHIRE OF HARVEY

REMOVAL AND DISPOSAL OF ABLUTION BLOCK BINNINGUP
Removal and disposal of the ablution block located in the car park at Binningup Beach.

OLD LOUIE'S SERVICE STATION, Yarloop

DEMOLITION, REMOVAL AND DISPOSAL OF ALL BUILDINGS AND SITE CLEAN-UP
Demolition, removal and disposal of all buildings and site clean-up including the removal of AC sheeting.

MIKE GOLLAN (Bunbury)**REMOVAL AND DISPOSAL OF ASBESTOS CLADDING**

Removal and disposal of asbestos cladding due to storm damage (dry cleaning site).

WESFARMERS PREMIER COAL LIMITED**FACE SHOVEL 01/08 DECONSTRUCTION**

Dismantling and disposal of the 01/08 face shovel (approximately 700 tonnes).

AUSTRAL BRICKS (Bunbury Selection Centre)**REMOVAL AND DISPOSAL OF SURPLUS WASTE MATERIAL**

Removal and disposal of all redundant general waste material surrounding the office building, including but not limited to, pathways, trees / shrubs / reticulation, brick pillar fencing, brick tower signage and miscellaneous footings.

HARVEY BEEF**DECONSTRUCTION OF CONTINUOUS COOKER**

Deconstruction, removal and disposal of continuous cooker, AC sheeting, flashing and associated miscellaneous.

O'DONNELL GRIFFIN**CABLE REMOVAL**

Shear cut cable into manageable lengths and loading onto semi-tipper at Alcoa of Australia, Wagerup.

AUSTRALIAN CHAR PTY LTD (Collie) – STAGE II**REMOVAL AND DISPOSAL OF AC SHEETING**

Removal and disposal of AC sheeting and flashings from part of the building wall closest to the furnace.

AUSTRALIAN CHAR PTY LTD (Collie) – STAGE I**OLD BOILER HOUSE**

Dismantling, removal and disposal of all asbestos. Inducement of 18m high structure and contents (approximately 1,200 tonnes).

BELVEN ENTERPRISES**REMOVAL OF SIX (6) REDUNDANT FUEL TANKS AT SHELL SERVICE STATION, BUSSELTON**

Remove and dispose of six (6) redundant fuel tanks in accordance with AIP removal guidelines.

SINCLAIR KNIGHT MERZ**DEMOLITION AND REMOVAL OF REDUNDANT STRUCTURES**

Demolition and removal of three (3) dwellings over five (5) lots, Waroona. Including but not limited to the removal and disposal of AC sheeting, flashings and fencing.

FUTURA CONSTRUCTIONS**DECONSTRUCTION OF DWELLINGS AT ROELANDS AND BRUNSWICK**

Dismantling and removal of redundant dwellings, including asbestos removal.

BODDINGTON GOLD MINE**CONCRETE REMOVAL**

Removal and disposal of the concrete.

BODDINGTON GOLD MINE**CRUSHING CIRCUIT AND LEACH ABSORPTION PLANT**

Dismantling, removal and sales of all re-usable components. Demolish and disposal of the balance of the plant consisting of approximately 2,000 tonne in total.

RESPONSIVE ENVIRONMENTAL SOLUTIONS

Gull Service Station, Steere Street Collie

Dismantle and removal of AC sheeting:

Demolish & removal of building redundant fuel tanks:

Removal and disposal of contaminated soil and back fill and compact to finish ground level Class 3

2005

RYDER ELECTRICAL (Bunbury)

DEMOLITION AND DISPOSAL OF REDUNDANT STRUCTURE AND MISCELLANEOUS

Demolition and disposal of redundant structure.

R & M Prosser & Sons – Horn Building (Bunbury)

DEMOLITION AND DISPOSAL OF REDUNDANT STRUCTURE AND MISCELLANEOUS

Demolition and disposal of redundant building and general waste removal.

V & V WALSH

DECONSTRUCTION, REMOVAL AND DISPOSAL OF REDUNDANT TANKS.

Demolition and disposal of redundant tanks

AQWEST / WATERCORP (Brunswick)

DECONSTRUCTION, REMOVAL AND DISPOSAL OF REDUNDANT PLANT, EQUIPMENT AND STRUCTURES

Demolition and disposal of all redundant plant / equipment, buildings and concrete tanks.

AUSTRALIND

Demolition and Concrete Tank

2004

MAIN ROADS / GHD MANAGEMENT

Demolition and removal of old workshop, spray booth and site clean-up. Including the removal of contaminated soil which was placed in a bio-pile for soil remediation.

ADELAIDE TIMBER MILL - Collie

Demolition and removal of wood burner, concrete footings and other miscellaneous materials to a clean site finish.

SANDLEWOOD ROAD - Brunswick

Demolition and removal of six (6) dwellings, hall and sheds at the old camp site and final clean-up.

ALCOA WAGERUP FUEL STATION

SUB CONTRACTED TO C.HULL

Dismantle and removal of fuel tanks and contaminated soil at a service station in Yarloop.

HASTIE ROAD PRE-SCHOOL

Demolition and disposal of building and site clean-up.

DEPT of AGRICULTURE

MEDINA RESEARCH STATION, Perth

Dismantle and removal of asbestos cladding from buildings.

R&M PROSSER, Bunbury

Demolition and disposal of concrete batching plant on Denning Road, Bunbury.

WATER CORP / AQWEST

Eaton & Australind

Demolition and removal of all redundant concrete tanks, sumps and final site clean-up.

MAIN ROADS / GHD MANAGEMENT

Demolition and removal of old workshop, spray booth and site clean-up. Including the removal of contaminated soil which was placed in a bio-pile for soil remediation.

ST JOHN of GODS PROJECT

CONVENT (duration of 3 weeks)

Demolition and disposal of building.

MIDWIFERY BUILDING (duration of 4 weeks)

Demolition and disposal of building.

CONCRETE LINK UPS (duration of 1 week)

Demolition and disposal of the concrete link ups. Final clean-up of work site.

G&G STEELWORKS - O'Connor

Dismantle and disposal of asbestos roof sheeting approx 10 mtrs from ground level.

Class 1

2003

SOTICO Yarloop

Demolition and disposal of old wood burner, storage sheds, load out dump hoppers, drying kilns and concrete footings.

AUSTRALIND PIGGERY

Demolition and removal of old piggery.

TODD BALLANTYNE EARTHMOVING

Demolition, removal and disposal of concrete tanks ex-Water Corp.

DEPARTMENT of HOUSING & WORKS

OLD FORREST LODGE AGED CARE FACILITY

Blair Street Bunbury

Demolition, dismantle and disposal of building.

Demolition and disposal of six (6) residential dwellings adjacent to the Bunbury Regional Prison and in addition, removal and disposal of asbestos roofs and fencing. Final site clean up.

BUSSELL MOTOR HOTEL

Demolition and disposal of hotel and motel.

ADELAIDE TIMBER CO

Demolition and removal of:

Palgarup Timber Mill

Witchcliffe Timber Mill

Wilga Timber Mill

2002

FORREST DRIVE-IN / CINEMA

Demolition and removal of the Forrest Cinema.

**ILUKA RESOURCES LTD
ENEABBA**

CONCENTRATOR PLANT 026

Dismantling, removal and sales of all re-usable componentry. Approximately a 500 tonne inducement with a height of 18m onto floating pontoons with no damage to the pontoons which were sold as re-use. Demolish and dispose of the balance of the plant (approximately 1,000 tonnes in total).

04 DRY PLANT

Dismantling, removal and sales of all re-usable componentry. Approximately a 800 tonne inducement at a height of 22m. Demolition, dismantling and removal of the balance of equipment (inclusive of radial stacker, thickener tank, 04 dry plant and site clean up). (Approximately 1,200 tonne in total.)

2001

**JOYCE RURAL CHEMICAL PLANT
Pinjarra**

(SMITH BROUGHTON)

Demolition and salvage of all re-use plant / equipment and scrap metals.

BHP TITANIUM MINERALS

Beenup

Decommission of a 3500 tonne mineral sand dredge. Removal from site and re-establishment of working area. Operations included salvaging and cataloguing of re-usable equipment (ie all electrical and hydraulic equipment, cabling, switch gear, etc).

2000

Dismantle a 3500 tonne floating structure – mineral sands concentrator and surge bin plant. All structures, components, and fittings were laid down, catalogued, packaged, consolidated and transported to Bunbury Port for shipping to Mozambique.

BUNBURY REGIONAL HOSPITAL

Demolition and removal of a five (5) storey hospital including associated miscellaneous buildings consisting of approximately 35,000 tonnes of concrete waste material. The site was restored to natural contours with a view for redevelopment. Maximisation of recycled / reuse opportunities including building rubble (recycled by J&P's mobile crusher for road base).

**BUNBURY POWER STATION
(SUCONTRACTED TO TRIO INDUSTRIES)**

Demolition and removal of switch yards, asbestos pipeline, pump station. Processed and directly exported from site approximately 15,000 tonnes of scrap metal. In addition, we removed and processed approximately 40,000 tonnes of concrete (demolition waste).

AMPOL / SERVICE STATION, Wattleup

Demolition and disposal of redundant service station.

1999

BHP IRON ORE – Newman

Dismantle and remove structures at a decommissioned diesel fired power plant. This included a 137m x 14m x 7.5m shed, and a clean up of this site.

ALCOA (AUST) LTD JARRAHDALÉ MINESITE

Dismantle and removal of 600 tonnes of structural steel and plant / equipment from the bauxite mine.

AQWEST BUNBURY , Carey Park

HEDemolition and removal of water treatment plant.

PIONEER ASPHALT, Subiaco

Dismantle and removal of workshop (approximately 50 tonnes of structural steel). Removal and disposal of asbestos cladding, recovery of underground petrochemical tanks, degassed and disposed.

PIONEER ROAD SERVICES

Demolition and removal of all buildings and equipment at Herne Hill Asphalt Plant.

1998/1999

PIONEER CONCRETE

Demolition and removal of all buildings and complete Crushing Plant Circuit, Herne Hill, consisting of approximately 1,300 tonnes of scrap metal and salvage.

INDEPENDENT CONTRACTORS

Coogee Skin Stores – removal and disposal of 12,000 sq/m asbestos wall and roof sheeting from three buildings.

Pier 21 Sheds – removal and disposal of 1,500 sq/m asbestos roof sheeting. Dismantled two buildings for re – erection.

Govt. Stores Dept. Pilbara Street, Welshpool – removal and disposal of 5 500 sq/m of asbestos roof sheeting and wall cladding. Dismantled building, fittings and equipment.

Carousel Shopping Centre – dismantle and removal of roof sheeting, structural steelwork. Demolish two -storey brick office block.

Westrail Depot East Perth – removed 4,000 sq/m asbestos roof sheeting. Dismantle and disposed building structural steelworks.

1997/1998

SHELL COMPANY AUSTRALIA—Bunbury

Demolition, dismantling and removal of entire fuel depot Marlston Hill, Bunbury, inclusive of below ground fuel tanks. Removal off site and remediation of all contaminated soil.

Demolition and disposal of fuel depot, Kattanning, inclusive of removal and disposal of below ground tanks. Removal off site of contaminated soil.

1997

BUNBURY CITY RACEWAY

Erection of four 38m x 16 tonne light towers – including earthworks and concrete footings.

Supply and fabricate materials pertaining to the two (2) grandstands (40m and 96m) which equates to approximately 200 tonnes of mostly second-hand structural steel. This includes the supply and installation of the corporate viewing boxes.

TELSTRA - Carnarvon

Demolition and disposal of four (4) radio towers: 2 @ 43m and 2 @ 99m in height. In addition, the removal and disposal of buildings, asbestos roofing / cladding, PCB's, CFC's, batteries other hazardous materials.

GRIFFIN COAL - Chicken Creek

Demolition, dismantling and removal of 400 tonne crushing circuit plant and load out facility and final site clean-up.

1996

DEPARTMENT of CALM

Dismantling and removal of all above and below ground fuel tanks (11 locations throughout the South West) and removal and disposal of contaminated soil.

1981/1998

WORSLEY ALUMINA Collie

Processing of approximately 5,000 tonne of wire rope off conveyor lines into 3m lengths. Transportation off site for exportation.

1992/1993

SONS of GWALIA Greenbushes

Demolition and disposal of 1400 tonnes of structural steel and plant / equipment from the **IP Plant**.

1995 - 1996

Demolition and disposal of 700 tonnes of structural steel and plant / equipment from the **TRP Plant**.

1995

Demolition and disposal of **SX Acid Plant**.

1994/1995

WESFARMERS COAL

Demolition and disposal of two (2) 150 tonnes of structural steel **Coal Load Out Hoppers**.

1997/1998

Total demolition and disposal of various redundant Collie mine sites.

CSA

No. 5

No. 3

No. 6

No. 2

1995

FREMANTLE PORT AUTHORITY

Dismantle and remove four (4) 60 tonne ship loading cranes (20m high wharf cranes).

1995 - 1996

Demolition and disposal of various buildings within North Perth and in addition the removal and disposal of 6,000m² of asbestos roof sheeting (from 9m high structures).

1995 /1999

CALTEX Australia

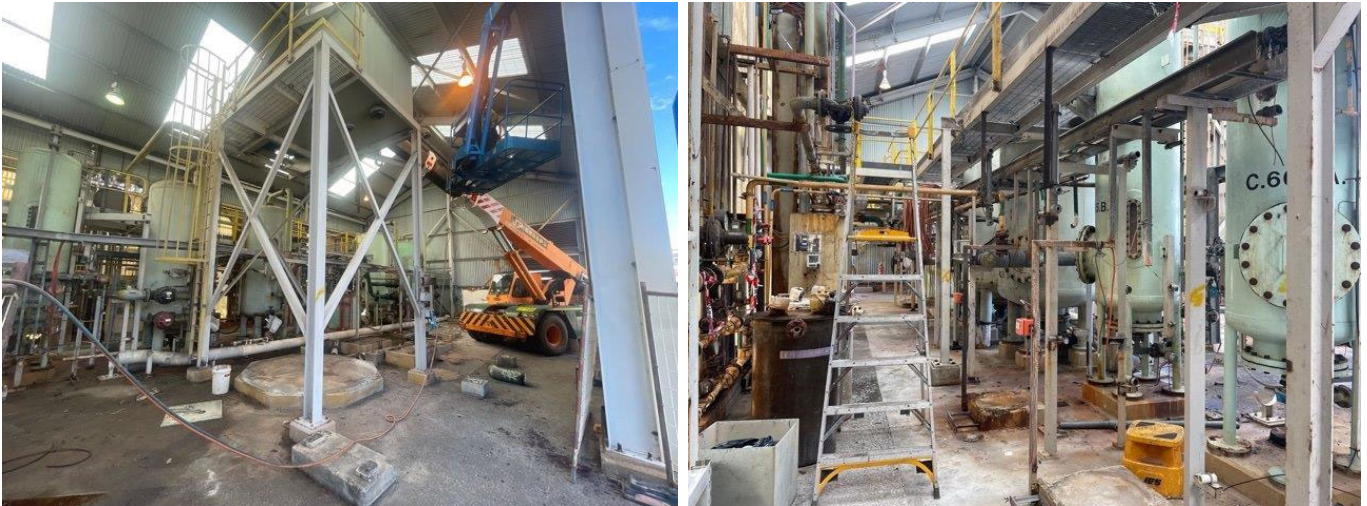
Demolition, dismantling and removal of redundant fuel depots (17 locations throughout Western Australia).

1994

CSBP – Kwinana

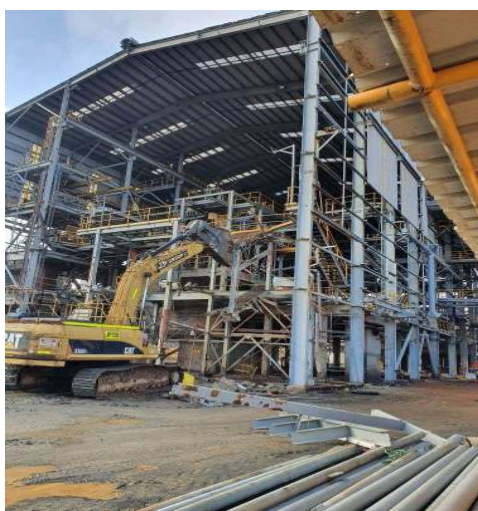
Demolition and disposal of 800 tonnes of structural steel from the **Sulphuric Acid Plant**. In addition, the preparation and neutralisation of approximately 800 tonnes of acid bricks on site.

JPD dismantled and removed associated plant and equipment that was identified in the site visit. To Transport plant and equipment, oxy cutting and hand tools were used to make the pieces transportable sizes. All steel work that was attached to the existing shed was cut flush with the columns and grounded up then painted with under coat. JPD removed all redundant plinths that had been identified in the site visit to a level of 100mm below floor level then back filled with 40mpa concrete.



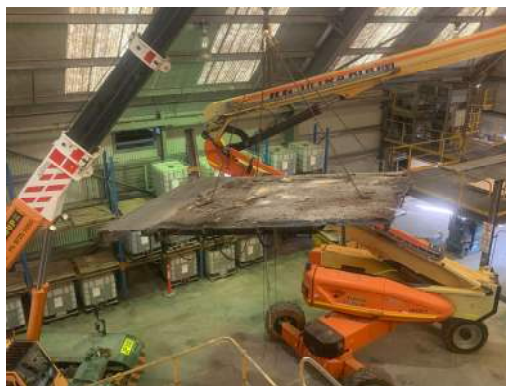
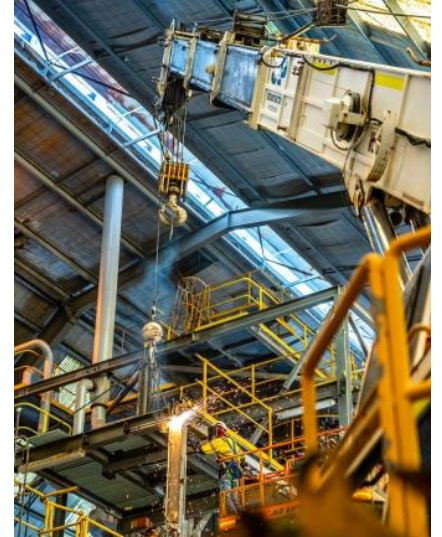
JPD dismantled/demolish, remove and dispose off-site all redundant miscellaneous plant/equipment, buildings, scrap and general waste from the New Mill Building, New Gravity Building, Existing Tantalum Building and End bay of existing Tantalum Building which consisted of:

Feed hopper and conveyor, Compressors, Dryers and tanks from the old Flock Shed, 2000kva transformers, MCC Switch rooms and contents, 4 x mills and associated switch gear/transformers and spares, conveyor system, gantry cranes, banana screens, thickener tanks, Russell jigs, spiral banks & distributors, cyclones, derik screens, shaking tables, Filter belt, Dryer & bag house, Small ball mill, Kelsey jig, Warman/Ash pumps and non-ferrous and ferrous scrap materials.



J&P Deconstruction dismantled, removed and disposed of ammonia gantry, stacks, tanks, caustic tank, ventilation system, storage silos, compressor piping, compressors, receivers, pipe work, pipe supports, hangers and redundant equipment. J&P Deconstruction removed the concrete plinths beneath the compressors and repaired the floor to match the existing concrete.

J&P Deconstruction removed and disposed the pond liners and internal fence and return Pond 1 and Pond 2 to average ground level. Soil sampling and remediation of the area was undertaken to ensure no environment liabilities remain. Vegetation through the pond area was removed prior to remediation to avoid deleterious materials enter the areas of back fill and compaction.



This project saw the Deconstruction, removal and disposal of redundant buildings, offices, plant and equipment throughout the Boyanup Dairy Site.

The project involved many dual lifts, asbestos removal and excavator work, along with stripping out the internal plant and equipment.



The Bunbury Port Authority contracted J&P Deconstruction for the dismantle, removal and disposal of a redundant Conveyor Line and Ship Loader on one of their Bunbury Berths.

This project required Traffic Management Plans to ensure the safety of all Public who had access to the area, along with JPD and Bunbury Port Authority personnel.

Taking 4 weeks, JPD dismantled the 2 redundant Conveyor Lines prior to removing the ship loader.



In 2013 J&P Deconstruction undertook the Deconstruction, removal and disposal of 2 x Twin Boom Stackers at Worsley.

The work was conducted over a period of months and included removing, Boom Ropes, Conveyor Belts, redundant Electrical Cabling and Cable Tray.

Each Stage was meticulously planned to ensure safety of all employees and contractors on site.

2 EWP's and 220T Cranes were used to lift sections to the ground.



Dismantle, Removal and On Sale of Redundant Plant and Equipment located at Iluka Resources Eneabba Site

J&P Deconstruction spent a period of 5 months at the Eneabba site and were required to Dismantle and Remove from site, via J&P Transport, the following redundant plant and equipment:

- 2 x Thickner Tanks
- 1 x Large EDC Unit
- Transformer
- Spiral Banks
- & Pumps

Once removed from site all items were on sold to other customers.

The balance of redundant Plant and Equipment on site, which could not be on sold, was dismantled and transported to our Scrap Processing Facility in Dardanup for processing.



**DISMANTLE AND PACKAGING OF REFINER AND SANDING LINE.
DURATION: 8 WEEKS**

J&P Deconstruction disassembled the Refiner and Sanding Line for Laminex Perth.

The plant was on sold by Laminex to German companies Module Systems and Kulenkampff & Co for reassemble and reuse in Germany.

Once the Refiner was disassembled, all parts needed to be washed thoroughly to meet quarantine requirements.

Each part, was catalogued, labeled and packed into shipping containers ready for transportation to Germany.

The Sanding Line was also washed to meet quarantine requirements, then catalogued, labeled and packed for transportation to Germany.



Dismantle & Removal 2 mobile cranes—HMAS Stirling, Garden Island
 Duration approx 3 months

There were four stages for the dismantling and removing of each of the two mobile cranes.

Stage One

Consisted of getting the crane into place on the Wharf, then carrying out two crane studies and preparing for the Jib tail removal and preparing for the cabin removal. The removal of the top of the main car body was done to allow access to the winches and associated equipment.

Stage Two

Consisted of the removal of the equipment from the inside of the car body. After the inside of the car body was stripped out the top of the car body, it was reduced in size and removed from the slew ring up and place into the processing area to be further reduced in size for transport.

Stage Three

Removal of the hand rails and walk ways from around the truck top and removal of the stair way that goes on to the truck top. The truck top was prepared and half the slew for removal. This section was cut in half then removed in two lifts with the crane and placed into the processing area to be reduced in size for transport.

Removal of the stair way on the next section and the other associated equipment. The cable reel and associated equipment were removed. The four legs were cut above the first platform level and removed one at a time and placed into the processing area to be reduced in size for transport off site.

Stage Four

Consisted of preparation for the lifting off of the base section from the four travel wheel sections. Using two cranes, a dual lift was conducted to remove the leg sections from the wheel sections. Once the leg sections were removed and placed on the wharf, the cranes were repositioned so that the leg sections could be split and placed into the processing area to be reduced in size for transport. The wheel sections were removed off the wharf, loaded on to J&P Transport and removed from site and the wharf area cleaned up. Once the works had been completed and all sections of the crane had been removed, JPD mobilise to the second crane.

Both mobile cranes were dismantled, cut down in size for transportation off site within the timeframe and budget.

This Project was another Incident/Accident Free Project from J&P Deconstruction.



BOC

2009

Removal of redundant plant—Stage 2
Removal of Cooling Towers
Duration approx one week
Class 2

There are two redundant towers on site. These towers are demolished using a 25 tonne crane and lowered to the ground in modules of 5 to 8 tonnes , then loaded out to be processed.

Dismantling and removing the Cooling Tower in sections, beginning at the top and working downwards, lifting each segment with the 12 or 25 tonne crane.

JPD utilised their EWP and 12Ton crane, with a spotter on the ground.

All vessels were removed in sections to reduce weight and size, this was achieved by unbolting flanges. Each load was slung prior to unbolting.



BOC LIMITED

2008

DECONSTRUCTION AND REMOVAL OF REDUNDANT 600M³ PLANT / HYDROGEN PLANT AND MISCELLANEOUS – LOT 52 MASON ROAD (KWINANA)

This plant was constructed in the early 1960's and all of the heavy plant was assembled before the shed was erected. Now the plant and equipment is to be removed and the shed is to stay intact. This meant that all of the compressors have to be dismantled down to pieces weighing no more than 5 tonne and removed utilising the over head gantry.

Dismantling and removing the chequered plate flooring from inside building



Removal of 13 tanks in total from Iluka Resources and Bemax this also included the removal and disposal of the conveyors and supports attached to the tanks.



JPD utilised their CAT65 tonne High Reach Excavator (reaches to 23 metres) complete with MSD30 Rotating Shear to weaken some of the structural steel supports then locked the shear jaw on to the top weakened section of the bucket elevator (top third) to bring each weakened section safely to the ground.

Long Reach complete with rotating shear being used to cut the roof structure and shear side wall of tanks.



Lower part of tank being sheared by PC350 Excavator with shear.

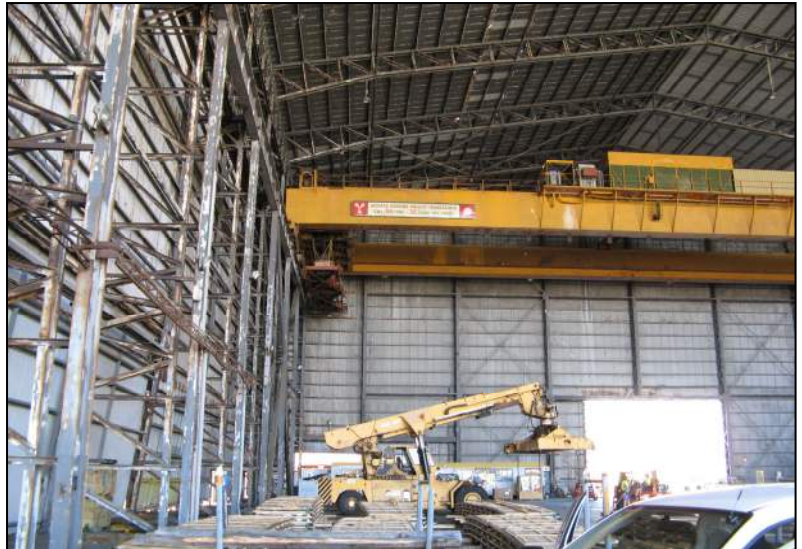
FREMANTLE PORTS

2007

Removal of 65 ton overhead gantry crane and three external frames at excessive of 20 meters height.

Gantry Crane 65T SWL x 50.8 metre span.

The gantry crane's brake system was disabled and the crane was towed to the external area of the shed, and all the bridging units such as the container hoist were removed. The centre spans were cut diagonally to allow the front and rear tram bearer frames to be lifted down as two separate lift units. This would primarily be to minimise crane lift down weight. During the final part of this cutting exercise a crane will be holding each of the 65 tonne main beams.



Once at ground level the two longitudinal sections would again be slewed sideways into the fenced off work area for further cutting, and to free up full access into and out of the building.

Two (2) Hydraulic cranes were used for this project.

All materials pertaining to the gantry crane, once at ground level, were processed down for transportation and disposal.



Six Uprights and Trimming Beam

Once all of the gantry crane was removed, JPD proceeded with the dismantling of the external uprights and gantry runner beams flush to the opening of the shed.



JPD removed section by section utilizing the 50T crane and working from EWP Boom lift.

The sections were then disassembled, and lowered to the ground for further processing down in size. The pieces were loaded out for transport and disposal.

Removal & Disposal of 18 Absorption & Residue Tanks.
Approximately 15 metres diameter and 15 metres in height.

JPD used their Long Reach Excavator for this particular project.



Each section of tank had to be cut into long strips and brought down without damage to the surrounding concrete bund wall. They were processed on the ground by the 35t Komatsu Shear. This process was carried out without any damage to the ring beams as well as the external bund walls as these were to be reused for the new tanks.

These photos show the Long Reach and smaller shear in action.



The project was completed with six weeks. This consisted of processing all eighteen tanks, shipping off site the processed steel for export as well as removal of excess plinths, footings and retaining walls to enable the new gold room and processing plant to be erected.

Removal of bridge section between Tank Train 1 and Tank Train 2.

The bridge section was approximately 17 metres off the ground and 52 metres long—consisting of five sections that had to be dismantled and labelled for re-assembly at a different onsite location. This was a particularly difficult job as lifts had to be conducted over the existing workshop and offices. For this task a 500tonne crane was needed with 42 metres of luff and fly as pictured carrying out the final lift.



Dismantling former printing presses and ancillary works 600 tonne.

De-construction, removal and disposal of all redundant plant & equipment plus miscellaneous waste mostly being in confined space.

J&P Deconstruction dismantled, removed and disposed off site, all redundant miscellaneous plant / equipment, scrap and general waste throughout the printing building and outskirts, consisting of approx 20 press units and two folders of old printing units; including redundant ducting, pipe work, cable trays, walkway, platforms, staircases, gantry and railing, electrical switch gear and tanks; asbestos tiles, ink and oil residue impregnated in the equipment; and the balance of any metal materials and associated general waste.

The photos and article “Giant Killers” by Barry Winfield made the Sunday Times Newsletter. Here is a short extract:

“The J&P Crew’s first job upon arrival was to dismantle the eight units and two folders of press which were those used to print the Classified section of the Sunday Times and the Monday to Friday editions of The Australian. Shoe-horned into a long corridor surrounded by service lines carrying scheme water, gas and chilled water pipes that serviced two-thirds of the building’s air conditioning, deconstruction was extremely difficult. However, by the Christmas recess the A-B Press Hall was clear and ready for the builders.

Returning in the New Year, the crew and with more room to move in C-D Press Hall, the crew made fast work of decommissioning the twelve units of press line with the aid of a ten tonne crane.

A second stage of deconstruction was given to JPD; this was the removal of the redundant air conditioning and extraction systems that were located on the roof over the photographers’ department. Included in this was more redundant air conditioning plant in a central position of the building. This are resembled a spider’s web of service lines of which one third needed to be saved to keep the building operational.”

After five months of solid work, the crew headed home satisfied in the knowledge that another project had been completed meeting both the deadline and the budget.

GIANT KILLERS
By BARRY WINFIELD

The crew from the Banbury based J&P Group of Companies start the ball rolling in the refurbishment of The Sunday Times building on Stirling Street.

It was Monday morning October 23, 2006 when the J&P crew arrived on site to begin their first deconstruction job.

Fresh from decommissioning a 100 tonne cast steel at Cadiz, 20 men and four folders of Good Headlines newspaper printing press at The Sunday Times would be a walk in the park.

Well, if they thought cast was weak, they were in for a surprise, how much printing machinery it takes to everything, start one day inside the building from the east of the Black & White Market show, the same odd reason the job seemed to follow them everywhere, in the shop at lunch time, even in the toilet at night.

The first eight units and two folders of press to be removed were those that used to print the Classified section of The Sunday Times and the Monday to Friday editions of The Australian.

Shoe-horned into a long corridor surrounded by service lines carrying scheme water, gas and chilled water pipes that serviced two-thirds of the building's air conditioning, deconstruction was a very difficult task. However, by the Christmas recess the A-B Press Hall was clear and ready for the builders.

Returning fresh from Christmas and New Year celebrations and with bits of room to move in C-D Press Hall, the crew made fast work of decommissioning the twelve units of press line with the aid of a ten tonne crane.

With the occasional complaint from the staff short-cut Call Centre still working on the floor above, after seven days three teams of press in the floor both lines of press were cleared by March 5, 2007 and the area handed back ready for the building reform to commence.

A second stage of deconstruction was given to J&P, this was the removal of the redundant air conditioning and extraction systems that were located on the roof over the photographers' department. Included in this was more redundant air conditioning plant in a central position of the building. This area resembled a spider's web of service lines of which one third needed to be saved to keep the building operational.

As luck had it the weather turned humid and working conditions became unbearable and in the eyes of the crew. However, given all that Mother Nature could throw at them, combined with the more hidden problems that appeared at the most inappropriate times, this project was finished by the end of March.

Now after 5 months of crawling in Perth each week, Rex Barber and his band of deconstruction experts will head back home, satisfied that they have completed, on time, another successful project.

It was all spanners and chain-block

Starting point (how will we get it out?) Why did we volunteer for this job? The last lift

IS IT IN THE WAY? J&P WILL REMOVE IT!



BODDINGTON GOLD MINE — STAGE 2 CONCRETE REMOVAL

2006

Removal and disposal of the concrete.

Stage 2 consisted of the removal of one plinth which measured 4.5 metres height x 2 metres dia x 5 metres length and the 250 x 150 metres square concrete pad. The average thickness of the pad was .125mm, the walls were approx 1.5 metres height x .400 mm dia x 1.5 metres length.

Included in this were smaller concrete plinths which were spread throughout the area averaging from 1 metre square to 2.5—3 metres square.



JPD used its 322 Caterpillar with a 2 tonne rock breaker attachment and a PC 450 Komatsu with a 4.5 tonne D&M Breaker.



All concrete and reo-bar was removed and transported to the on site tip.



Once the pad was cleared of all concrete it was backfilled with gravel and track rolled.



BODDINGTON GOLD MINE — STAGE 1
CRUSHING CIRCUIT AND LEACH ABSORPTION PLANT

2005/2006

Dismantling, removal and sales of all re-usable components. Demolish and disposal of the balance of the plant consisting of approximately 2,000 tonne in total.

The photos below show tank train one. All walk-ways and pipework and electrical conduit were to be removed with no damage to the internals of the tanks as all tanks were to be re-used by BGM in their expansion project.



The photos below show the Crusher Circuit which had to be decommissioned to make way for site works for the new Expansion Project.



The Fine Iron Ore Bin was purchased by Griffin Coal for use at their Blue Water Power Station located in Collie in the South West of Western Australia.



The Bin was reduced in size utilising bracing and it was cut into four equal sections with a plasma cutter as per the engineer's directions for ease of re-alignment when the bin was re-assembled on site in Collie.



The Fine Iron Ore Bin was reduced in size to comply with MRD and Western Power requirements for transportation on multi-axel trailers to Collie.



Dismantling of the Concentrator Plant 026 (approximately 1,500 tonnes of scrap and re-use material).

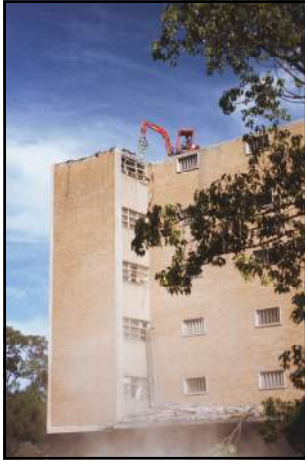
04 DRY PLANT

Demolition, dismantling and removal of all redundant equipment (inclusive of radial stacker, thickener tank, 04 dry plant and site clean up).



Demolition and removal of a five (5) storey hospital including associated miscellaneous buildings consisting of approximately 35,000 tonnes of concrete waste material.

The project was one of the more intricate jobs we have undertaken due to the fact that the building was not induced, therefore we had to deconstruct from the roof downwards using a small 2 tonne excavator and a bobcat. This continued until the building could be accessed by our larger excavators.



The photos below detail the building in its original state, then the half way mark to final completion.



The site was restored to natural contours with a view for redevelopment. Maximisation of recycled / reuse opportunities including building rubble (recycled by JPG's mobile crusher for road base).



This Wet Concentrator was deconstructed whilst still afloat in the pond which was 20 metres deep. Most of the contract was done during inclement weather with high winds which made scheduling dual crane lifts and unbolting structure steel at height difficult. The Concentrator was marked, packaged and transported to a storage facility in Bunbury for Client to ship to South Africa for re-assembly in a mineral sands mine.

The photos below show the dual crane lift (the cranes were 2 x 250 tonne crawler cranes) of one of the trommels which weighed approx. 60 tonne. The next photo shows a dual lift of one of the pontoons which weighed approx 130 tonne. The transport of the pontoons required Brambles Heavy Haulage with the use of multi axel steerable jinkers as detailed in the photographed below



BHP TITANIUM MIN BEENUP 1999 – 2000

Decommission of a 3500 tonne mineral sand dredge.

Removal from site and re-establishment of working area.

Operations included salvaging and cataloguing of re-usable equipment (ie all electrical and hydraulic equipment, cabling, switch gear, etc).

The first of the photos shows the dredge before it was “dry-docked”. The dredge was towed into the dry dock by two D9 Dozers, the dry dock was then bunded off and pumped out.

It was then filled with compacted sand as a hard work surface area was required for the operation of the 250 tonne crawler crane.

The salvage work was conducted utilising the on board cranes until it became necessary to switch to the land based 250tonne crawler crane.

All salvaged items were transported to our Bunbury depot and then on sold. All steel was recycled.



REFERENCE CONTACTS

ILUKA RESOURCES

Kieran Ryan – Contract Supervisor - 0409 377 918
Dismantle and removal redundant plant and equipment

LAMINEX GROUP

Joe Faulds—0457 372 347
Removal and disposal of redundant plant & equipment

BUNBURY PORT AUTHORITY

Mick Griffin—0438 962 173
Demolition and Removal of Conveyor and ship loader

NEWMONT BGM

Kevin McGroary—9883 3390
Site clean up and removal of redundant plant and equipment

TALISON GREENBUSHES

Chris Sharpe – Contract superintendent - 0427 318 345
Deconstruction of Tantalum Plant

WATER CORPORATION

Tony Addicoat—0429 116 442
Removal and Disposal of 2 x Concrete Tanks & Pipework

CORPORATE STATEMENTS

Core Values

Our core values are about the way we do things now. They help to steer us and our clients into the opportunities the future holds, including personal and professional fulfilment and success.

Recruit and train to be the best

J&P Deconstruction sets high expectations when recruiting new people. We do not only aim to recruit the most talented, enthusiastic and skilled personnel available; we aim to form a long term association with them.

Be honest

We encourage a culture where our people feel they can provide constructive input and feedback in any environment. Trust and honesty are fundamental to this value and allow us to communicate more effectively with one another without fear of the consequences.

Empower and trust

By giving responsibility and delegating authority we are also instilling a sense of pride in the work that our people do.

Show respect

We encourage a culture where our people feel that their efforts are appreciated by their peers, managers and clients. If consideration is shown it will be reciprocated.

Grow together as a team

By empowering our team, fostering their development and encouraging teamwork means that we will grow and improve as an organisation. This also means that our clients continue to grow and improve with us.

Always Play to Win

“Playing to win” means that we never shy away from the big challenges.

In fact, we create new opportunities that enable us to continue to grow and our people and clients to succeed.

This approach includes:

- Positive 'can do' attitude - belief in our ability
- Going the extra mile
- Innovative and creative problem solving
- Implementing right decisions

Celebrate Success

We believe that we must enjoy what we do. We endeavour to offer praise and recognition and appreciation for effort when it is due and deserved.

QUALITY STATEMENT

J&P Deconstruction is dedicated to providing services and products appropriate to its customer's needs, at a price that is competitive and cost effective.

To achieve this, J&P Deconstruction will endeavour to provide high value products and services at every level of business operations by:

Monitoring

Monitoring, measuring and continually improving processes and performance through training and statistical analysis.

Planning

By planning and implementing strategies to assist in the achievement of short, medium and long term objectives.

Compliance

Compliance of all employees to the requirements of the system.

Teamwork

To achieve J&P Deconstruction goals, teamwork is a must amongst our employees.

Our goal for quality is to **"do it once, do it right, the first time"**. This applies not only to the tangible product, but also to the processes involved in the output of services and products.

J&P Deconstruction Managers give full support to the procedures and work instructions, ensuring that activities are controlled in a manner that will achieve contractual obligations. It is mandatory that all staff follow the documented procedures and work instructions to maintain a consistent approach.

J&P safety policy is dedicated to 'Zero accident and incidents'.

Our safety plan continues to evolve and is being built on an associated assurance programme. All aspects of safe and efficient operation are being integrated into the daily working sheets to be completed before, during and after various tasks are undertaken. Successful completion of these documents requires team input.

Each week commences with the mandatory "toolbox meeting" to be chaired by the supervisor or manager of each division and attended by all on-site personnel. This meeting initiates the weekly programme. A monthly meeting on site is held to review the overall project.

Management constantly monitors the progress of the programme making changes where necessary to ensure ongoing quality performance and achievement of goals. Programs are flexible allowing for regular input from all personnel.

ENVIRONMENT

All Managers will plan and conduct their activities with a view to protecting and conserving the natural environment and employee health, by complying with legal requirements and meeting community expectations.

J&P Deconstruction is committed to providing for its employees and the wider community, a level of environmental awareness, management and control that is in line with community expectations and standards.

To give effect to the environment policy the following should be observed and implemented as far as is reasonably practicable:

Activities

Conduct activities to achieve a level performance in a manner consistent with current legal requirements and community expectations.

Education

Through planned training and education, ensuring that all employees and contractors are kept aware of and act in conformity with environmental laws.

Environmental Performance

Ensure that all managers are kept informed of and are responsive to the environmental performance of each division of J&P Deconstruction.

Technologies

Implement proven available technologies and practices as is reasonably practicable that will enhance environmental performance in a commercially effective way.

Monitoring

Regularly monitor and plan to improve environmental performance by setting achievable goals and monitoring progress toward them.

Assessment

Assess environmental impacts of all current and proposed activities.

Unforeseen Situations

Have in place and be prepared to implement plans in case of unforeseen environmental harm arising from activities of the operation.

Cooperation

Work cooperatively with all regulatory agencies.

Reporting

Provide the Directors, Managers and personnel with satisfactory evidence that environmental due diligence is being achieved.

Culture

Develop an identifiable corporate environmental culture with J&P Deconstruction.

Direction

Provide direction to operations within a diversity of environmental regimes.

Conformity

Conform, where possible and appropriate, with current and emerging international and domestic environmental standards.

Understanding

Be readily understood by all employees of and contractors to J&P Deconstruction.

Dust Emission

To put in place measures and contingency arrangements to minimise dust and ensure that the potential impacts of dust are recognised and minimised. Ensure that the dust levels generated by the works do not adversely impact upon welfare and amenity of employees or cause health problems.

Noise

To protect the amenity of nearby residents from noise and vibration impacts resulting from activities associated with the project by ensuring that noise levels meet statutory requirements and acceptable standards.

COMMUNITY SUPPORT

J&P Deconstruction Pty Ltd recognises and acts on our responsibilities to our community. We are committed to establishing and maintaining the company's place in the community as a responsible corporate citizen and to ensure that the operations benefit the community of which we are a part.

We monitor and continuously improve our activities and our performance to develop positive relationships with the community, built on mutual understanding and respect.

J&P Deconstruction recognises the key issues in assisting and promoting good community relations. These are:

- Environment
- Employment and training
- Local business participation (consumable products)
- Local infrastructure
- Communication



Government of **Western Australia**
Department of **Mines, Industry Regulation and Safety**



Demolition Licence Class 1

J & P DECONSTRUCTION PTY LTD

Licence Number **WAD66**

Nominated Supervisors under this licence:
JEFFREY JAMES CLARK

This Demolition Licence Class 1 is issued pursuant to the
Work Health and Safety (General) Regulations 2022.

It authorises **J & P DECONSTRUCTION PTY LTD** to carry out
Class 1 demolition work in accordance with the conditions
endorsed on the reverse side of this licence.

Date of Expiry: 23 April 2026



Licence Details

Licensee Name: J & P DECONSTRUCTION PTY LTD

Licence Number: WR596

Status: Current

Entity Type: Company

Issued Date: 31 Mar 2011

Expiry Date: 31 Mar 2024

Address: PICTON, WA 6229

Licence Type: Class B Asbestos Removal Licence

This licence is issued under the provisions of the following Western Australian legislation:

[Work Health and Safety \(General\) Regulations 2022](#)

Licensing Area: If you have any further queries please contact WorkSafe Business Service Centre on 1300 424 091 or by email at WorkSafeRegistration@dmins.wa.gov.au.

This is not an official extract of the register of licensees

Other Licences

Demolition Licence - WAD66 - PICTON

The licence information displayed on this screen is correct as at 05/12/22 9:59 AM. Recent transactions and licence information updates may not be shown.

Disclaimer

1. The licence information provided here is made available in good faith and is derived from sources believed to be reliable and accurate at the time of release on the Internet.
2. The Department of Mines, Industry Regulation and Safety has taken every care to provide correct and up to date information, but makes no assurance as to the accuracy or completeness of the licence information included in this site.
3. In some instances, where a renewal has been lodged and not processed by the Licensing Authority, the licence may appear to have expired. If the licensee appears as a holder of a licence on this screen with the status of "current", their licence is deemed current.
4. Please note also that, while the Licensing Authority issues licences to qualified and, in some cases 'experienced' industry members, it cannot and will not guarantee the work of licensees.
5. Consequently, the Department of Mines, Industry Regulation and Safety disclaims all responsibility and all liability (including without limitation, liability in negligence) for all expenses, losses, damages and costs which might incur as a result of using information obtained from the Licence and Registration Online Search, or for it being inaccurate or incomplete in any way, and for any reason.
6. By using the Licence and Registration Online Search function, you as a customer accept:
 - That information and data obtained using the Licence and Registration Online Search function is for information purposes only and should not be relied upon as evidence in legal proceedings.
 - Each user waives and releases the State of Western Australia and its servants to the full extent permitted by law from any and all claims relating to the usage of material or information made available through the Department of Mines, Industry Regulation and Safety and the Licence and Registration Online Search.



G A R D

GARD INSURANCE

GARD Insurance Pty Limited
ABN 96 605 493 454 AFSL 479 125
Level 7,
227 Elizabeth Street, Sydney NSW 2000

Attention Debbie Sills
Company Nexus Advisemet – Bunbury
Date 11th July 2023

Certificate of Currency

This document certifies that the Policy referred to below is currently intended to remain in force until 4.00pm on the expiry date shown below and will remain in force until that date, unless the Policy is cancelled, lapsed, varies or otherwise altered in accordance with the relevant Policy conditions or the provisions of the *Insurance Contracts Act 1984*.

COVER Public & Products Liability and Professional Indemnity

INSURED J&P Group Pty Ltd ATF Kingscape Unit Trust t/as J&P Metals, J&P Machinery, J&P Steel, Tolmachoff Holdings Pty Ltd, J&P Corporation Pty Ltd ATFT J&P Corporation Unit Trust, J&P Corporation Pty Ltd ATF Yuna Unit Trust, J&P Deconstructions Pty Ltd t/as J&P Deconstruction, CLPS Pty Ltd, CPSS Pty Ltd ATF CPSS Unit Trust, Cunningham PE Park Pty Ltd ATF Cunningham PE Park Unit Trust, PA Kwinana Unit Trust

SITUATION Worldwide excluding USA or Canada

LIMIT OF LIABILITY Public & Products Liability \$20,000,000 any one Occurrence and in the aggregate in respect to Products Liability
Professional Indemnity 1,000,000 any one Claim and in the aggregate for all claims made and reported to the Insurer during the Period of Insurance

POLICY No. GAR-PLPI-00798

PERIOD OF INSURANCE From: 30th July 2023 (at 4.00pm Local Standard Time)
To: 30th July 2024 (at 4.00pm Local Standard Time)

SECURITY 100% Certain Underwriters at Lloyd's (UMR B0831FIC0036623, B0831FIC0036122 & B0831FIC0037423)

This Certificate of Currency does not reflect in detail the Policy terms or conditions and merely provides a brief summary of the insurance policy that is, to the best of our knowledge, in existence at the date we have issued this Certificate of Currency.

In arranging this Certificate of Currency, we do not guarantee that the insurance detailed above will continue to be in force for the Period of Insurance as the Policy may be cancelled by either the Insured or GARD Insurance at any time in accordance with the terms and conditions of the Policy or in accordance with the terms of the *Insurance Contracts Act 1984*. GARD Insurance accepts no responsibility or liability to advise any party relying on this Certificate of Currency of such alteration or cancellation to this Policy.

Signed for and on behalf of GARD Insurance Pty Limited



Jeremy Simpson – Underwriter

26/07/2023

To Whom It May Concern,

CONFIRMATION OF INSURANCE CERTIFICATE

This is to certify that undermentioned Insurance Policy has been issued and is current until 4:00pm on 30/07/2024.

Insured's Name: J & P Group Pty Ltd ATF Kingscape Unit Trust T/As J & P Metals,
J & P Machinery Steel,
J & P Corporation Pty Ltd ATF
J & P Corporation Unit Trust as Trustee
J & P Corporation Pty Ltd ATF Yuna Unit Trust
J & P Deconstruction Pty Ltd T/As J & P Deconstruction
Including subsidiary or controlled companies, now or previously existing
or hereafter formed or Acquired including Mortgagees, Lessors and other
interested parties for their respective rights and interests.

Class: Commercial Motor

Policy Number: CPG20162098

Insurer: Global Transport & Automotive Insurance Solutions Pty Ltd T/as GT Insurance

Period of Insurance: 30/07/2023 to 30/07/2024 at 4:00pm local standard time

Brief Details of Cover: As per attached Coverage Summary

This is to certify that the above policy is current to the expiry date show above unless cancelled in the meantime, subject to the Terms and Conditions of the policy.

Disclaimer:

The information provided is a summary only and does not amend, extend, alter or set out the full terms of the policy referred to nor do we confirm or warrant the Insurance cover is in force at the date of this advice. You must always refer to the policy for full details and to the extent of any inconsistency the policy prevails. The policy is also subject to the operation of the Insurance Contracts Act 1984 (cth), including in particular, the insurer's rights under section 28 in relation to pre contractual non disclosure or misrepresentation. We will not provide any updates in relation to the policy to any third party unless we specifically agree to do so in writing with the third party.



Chris Michell
Authorised Representative No 1294805
6A & 6B Victoria Street
BUNBURY WA 6230
P: (08) 9722 0240
E: chris.michell@nexusadviser.net



26/07/2023

To Whom It May Concern,

CONFIRMATION OF INSURANCE CERTIFICATE

This is to certify that undermentioned Insurance Policy has been issued and is current until 4:00pm on 30/07/2024.

Insured's Name: J & P Group Pty Ltd ATF Kingscape Unit Trust
T/As J & P Metals, J & P Machinery, J & P Steel
J & P Corporation Pty Ltd ATF
J & P Corporation Unit Trust as Trustee
J & P Corporation Pty Ltd ATF Yuna Unit Trust
J & P Deconstruction Pty Ltd Trading As
J & P Deconstruction, including subsidiary or controlled companies now
or previously existing or hereafter formed or acquired, including
mortgagees, lessors and other interested parties for their respective
rights and interests.
CPSS Pty Ltd atf CPSS Unit Truck (Located Lot 81 Banksia Rd Dardanup)

Class: Workers Compensation Insurance

Policy Number: WWH0086131

Insurer: Allianz Australia Insurance Limited (WC)

Period of Insurance: 30/07/2023 to 30/07/2024 at 4:00pm local standard time

Brief Details of Cover: 1. As per WA Workers Compensation and Injury Management Act 1981
2. Common law shall be limited to \$ 50 million any one person or \$ 50 million for any
number of persons arising out of the same event

Extensions: Blanket Principals Indemnity - Act & Common Law benefits with a waiver of subrogation
ANZSIC: 332200
RATE: 2.47%

This is to certify that the above policy is current to the expiry date show above unless cancelled in the meantime, subject to the Terms and Conditions of the policy.

Disclaimer:

The information provided is a summary only and does not amend, extend, alter or set out the full terms of the policy referred to nor do we confirm or warrant the insurance cover is in force at the date of this advice. You must always refer to the policy for full details and to the extent of any inconsistency the policy prevails. The policy is also subject to the operation of the Insurance Contracts Act 1984 (cth), including in particular, the insurer's rights under section 28 in relation to pre contractual non disclosure or misrepresentation. We will not provide any updates in relation to the policy to any third party unless we specifically agree to do so in writing with the third party.

Chris Michell
Authorised Representative No 1294805
6A & 6B Victoria Street
BUNBURY WA 6230

DEMOLITION LICENCE DEFINITIONS

A licence is required to perform certain types of demolition work. It is an offence to do any of the work described as Class 1 or Class 2 demolition work unless licensed to do so.

Class 1

The definition of Class 1 is demolition work of any of the following:

Work comprising the total demolition of a building or structure that is 10 metres or more in height when measured from the lowest ground level of the building or structure to the highest part of the building or structure;

Work - Comprising the partial demolition of a building or structure that is 10 metres or more in height when measured from the lowest ground level of the building or structure to the highest part of the building or structure; and

Affecting the structural integrity of the building or structure.

Work—Comprising the total or partial demolition of a building or structure; and

Involving the use of load shifting equipment on a suspended floor.

Work comprising the total or partial demolition of a building or structure containing pre-tensioned or post-tensioned structural components of a building or structure;

Work comprising the total or partial demolition of a building or structure containing precast concrete elements erected by the tilt-up method of construction;

Work involving the removal of key structural members of a building or structure so that the whole or a part of the building or structure collapses;

Work done to a building or structure involving explosives;

Work comprising the demolition or partial demolition of a building or structure that involves the use of a tower crane or any crane with a safe working load greater than 100 tonnes;

Work involving the removal of an area of brittle or fragile roofing material in excess of 200m² from a building or structure if any part of the area to be removed is 10 metres or more above the lowest ground level of the building or structure.

Class 2

The definition of Class 2 is demolition work comprising the total or partial demolition of a building or structure that is less than 10 metres in height when measured from the lowest ground level of the building or structure to the highest part of the building or structure but does not include -

The total or partial demolition of a single storey dwelling; or

Work of a kind referred to in paragraphs (3), (4), (5), (6), (7) or (8) of the definition of Class 1.

"licensed person" in relation to Class 1 or Class 2 demolition work means a person who has been issued with a licence that allows that person to do that class of demolition work.

"licence" means a licence issued under regulation 142S, that is, a person who satisfies WorkSafe Western Australia Commissioner that he or she is able to do that class of demolition work in a safe and proper manner.

**Guideline of the Demolition Licence.*